

DMA-20

CAN Touch Display
TFT Color 2.4"
Panel Mount

TFT 2.4" Color	CAN 2.0A/B	IP65 SPLASH PROOF	PANEL MOUNT
miCon-L	OPEN SOURCE	USB	BUZZER
ARM® CORTEX®	7..32V=	°C -20/+50	SHOCK PROOF



FEATURES

- Universal CAN Display
- Color Touch TFT 2.4" 240x320p
- LED Backlight
- Design Template Selection via CAN
- No Programming necessary
- Open Source Programming Option
- Compatible with all CAN Mini-PLCs
- Backside Mini-PLC Mounting Plate
- Front IP65 Protection Grade
- Panel-Mount without visible Screws
- Panel Cut-Out (LxW): 106 x 78 mm
- Dimensions (LxW): 115 x 85 mm
- Operating Voltage 7 to 32 VDC
- Engineered and manufactured in Germany

APPLICATIONS

- Industrial and Building Automation
- Automotive and Maritime Technology
- Technical Education / University
- Test System Control

DESCRIPTION

The TFT 2.4" CAN Display DMA-20 allows connection to any Mini-PLC which supports a CAN interface. It's bright 240 x 320 pixel TFT display integrates resistive touch technology.

Both display design and menu can be selected out of a variety of templates with one single CAN message. This feature ensures that no display programming is necessary. The DMA-20 can be fully integrated within the graphical miCon-L Software Suite supporting any BARTH® Mini-PLC with CAN interface. With the Open Source Programming option the DMA-20 can be easily user-customized within the powerful KEIL® µVision® Software Suite.

The DMA-20 is also available as customer-tailored OEM version within 8 weeks.

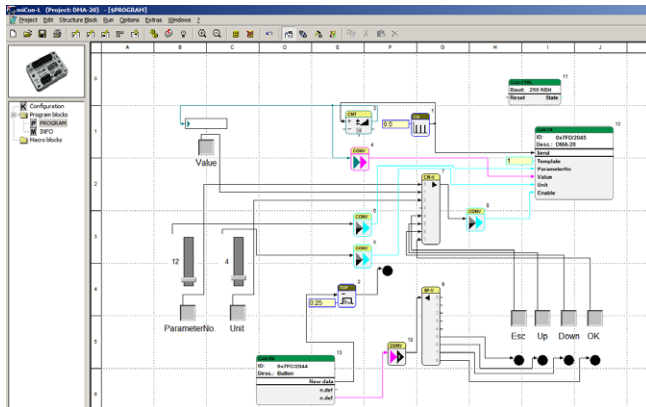


DMA-20

PROGRAMMING WITH MICON-L

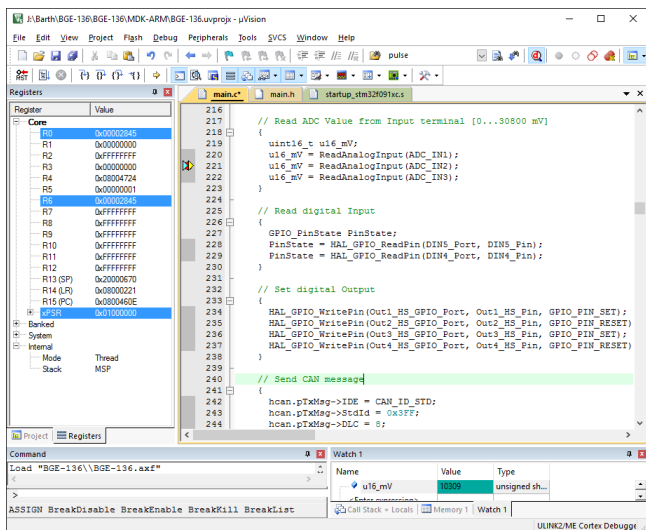
Without learning a difficult programming language the DMA-20 can be easily controlled using vivid CAN function blocks.

The miCon-L software suite features programming, simulation and test in one unique software design tool. The flexible CAN programming option offers a variety of possibilities in industrial, automotive and maritime applications. CAN programming has never been easier!



OPEN SOURCE C-PROGRAMMING

The DMA-20 can also be programmed as Open Source display using the powerful KEIL® µVision® Software Suite. For everyone who is familiar with C-Programming this option opens up a variety of hardware-oriented features in a realtime environment with powerful debugging features.



SPECIFICATIONS

Operation Voltage	7 to 32 VDC
Current Consumption	100 mA @ 12 VDC 55 mA @ 24 VDC 45 mA @ 32 VDC
Fusing	1 A max. (external)
Interfaces	CAN 2.0A/B (miCon-L/Open Source) 50, 100, 125, 250, 500 kbit, 1Mbit CANopen®, SAE J1939 (OS) NMEA 2000 (OS) USB 1.0, 2.0, 3.0
Memory	5Mb Flash, 196k RAM
Security Features	System and independent watchdog Fail safe oscillator Power on/down reset Supply voltage supervisor
Conformity	2004/108/EG, 2004/108/EC 2014/30/EU
Electrical Connection	pluggable spring terminal connectors 0.25 to 1.5 mm ²
Operation Temp.	-20 to +60 °C (IEC 60068-2-1/2)
Storage Temp.	-30 to +70 °C (IEC 60068-2-1/2)
Shock Resistance	min. 50 m/s ² (5G)
Vibration Resistance	min. 10 m/s ² (1G) @ 10 to 100 Hz
Protection Grade	Front panel: IP 65 (with optional gasket SEA-23)
Housing Material	Panel: PMMA Cover: stainless steel V2A 1.4301
Weight	200 g
Dimensions	115 x 85 x 41 mm (LxWxH) Panel cut-out: 106 x 78 mm
Ordering Information CAN Display	CAN Touch Display DMA-20 Art. No. 0044-0020 GTIN 4251329401290
Ordering Information Accessory	Connection Cable VK-35 for Open Source programming Art. No. 0091-0035 GTIN 4251329401276 Programmer ST-Link/V2 ISOL for Open Source programming Art. No. 0017-0066 GTIN 4251329401269 Gasket SEA-23 for DMA-20 Art. No. 0522-0023 GTIN 4251329401344 Mini-PLC STG-800 Art. No. 0850-0800 GTIN 4251329401207

DOCUMENTS, VIDEOS & SOFTWARE

www.barth-elektronik.de

www.micon-l.de

www2.keil.com/stmicroelectronics-stm32/mdk