







# STG-700

## CAN Mini-PLC Stepper Motor Controller

<b>2</b> ANALOG INPUT	<b>2</b> DIGITAL INPUT	<b>4</b> POWER OUTPUT	<b>1.5A</b> BIPOLAR STEPPER
<b>CAN</b> BUS	 TTL-232	 SOLID STATE	 miCon-L
 8...32V=	 °C -40/+50	<b>IP66</b> SPLASH PROOF	 SHOCK PROOF



## FEATURES

- Tiny CAN Logic Stepper Motor Controller
- 2 analog Inputs 0 to 30 VDC, 12 bit ADC
- 2 digital Inputs up to 1 kHz
- 4 Power Outputs up to 1.5 A
- Power Stepper Motor Output 1.5 A
- 1 CAN 2.0A/B Interface
- Reliable Solid-State Outputs
- Fail Safe Oscillator
- Programmable Status LED
- TTL-232/USB Connection to PC
- Intuitive graphical Programming Capability
- Wide Operating Voltage Range 7.8 to 32 VDC
- Wide Operating Temp. Range -40 to +50°C
- Vibration resistant and rugged Sealing
- Aluminium Diecast Housing IP66
- Engineered and manufactured in Germany

## APPLICATIONS

- Industrial Automation
- Building Automation
- Automotive Technology
- Process Control

## DESCRIPTION

The brandnew STG-700 integrates a powerful stepper motor controller with an ultracompact Mini-PLC in a splashproof aluminium diecast housing.

The graphical programming capability, universal I/Os and a CAN interface open up a variety of industrial and also battery-powered 12/24V applications.

For example, the STG-700 is able to control a large format display using a bipolar stepper motor converting an analog or digital input signal to a corresponding motor angle.

Also x-by-wire systems can be realized using the STG-700 as both control and power unit.

As the STG-700 is fully integrated in a splashproof aluminium diecast housing, additional housings will be not necessary. This fact makes the Mini-PLC ideal for applications within harsh environment.

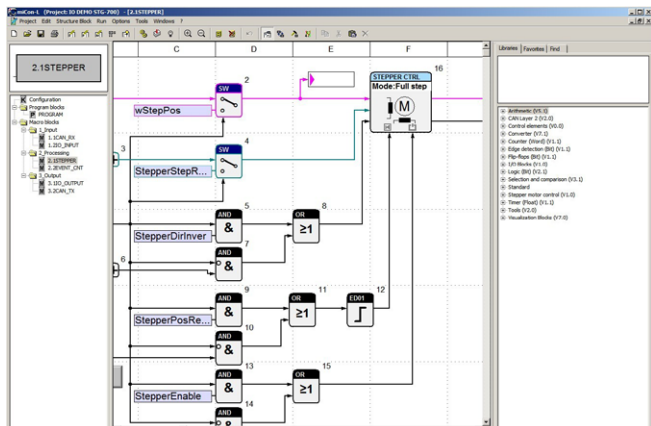
The STG-700 is also available as customer-tailored OEM version.

# STG-700

## PROGRAMMING WITH MICON-L

Without learning a difficult programming language the Mini-PLC can be easily programmed using simple and vivid graphical function blocks. This block design meets graphical standards of the latest graphical programming languages.

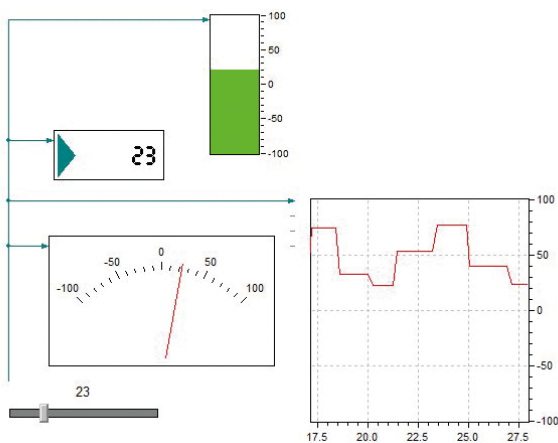
The miCon-L software suite features programming, simulation and test in one unique software design tool. The flexible programming option offers a variety of possibilities in industrial, automotive and maritime applications.



Programming the STG-700 follows using the USB port of your PC with installed miCon-L software suite and the VK-16 USB Connection Cable.

The miCon-L Software supports full simulation and visualisation operation modes.

miCon-L provides a variety of visualisation blocks and interactive elements to control and debug the Mini-PLC.



## SPECIFICATIONS

<b>Operation Voltage</b>	8 to 32 VDC
<b>Current Consumption</b>	5.6 A max.
<b>Fusing</b>	6 A max. (external)
<b>CAN</b>	CAN 2.0A (11 bit ID) CAN 2.0B (29 bit ID), 100, 125, 250, 500 kbit
<b>Digital Input IN3 - IN4</b>	$U_{IN} = 0$ to 30 VDC, $R_I > 30$ kOhm $U_{LOW} \leq 5$ VDC, $U_{HIGH} > 5$ VDC $f_{IN} \leq 1$ kHz, $t_{IN} \geq 1$ ms
<b>Analog Input IN1 - IN2</b>	$U_{IN} = 0$ to 30 VDC, $R_I > 11$ kOhm
<b>Accuracy ADC</b>	$\pm 1\%$ (< 0,2 VDC) 12 Bit
<b>Digital Output OUT1 - OUT4</b>	$I_{OUT} \leq 1.5$ A (resistive load) @ $f_{OUT} = 0$ to 100 Hz $U_{OUT} \geq U_{IN} - 0.45$ V, $I_{TOT} \leq 4$ A
<b>Stepper Motor Output A1, A2, B1, B2</b>	Motor Type: bipolar Motor Current: 0.1..1,5 A (adjust.) Step Modes: 1/1, 1/2, 1/4, 1/8
<b>Security Features</b>	Watchdog (WD) Fail safe oscillator (FSO) Brown out detection (BOD) Power up timer (PUT)
<b>Conformity</b>	2004/108/EG 2004/108/EC 2014/30/EU
<b>Electrical Connection</b>	plugable screw-type connectors 0.25 to 1.5 mm <sup>2</sup>
<b>Operation Temperature</b>	-40 to +50 °C (IEC 60068-2-1/2)
<b>Storage Temperature</b>	-40 to +70 °C (IEC 60068-2-1/2)
<b>Shock Resistance</b>	min. 100 m/s <sup>2</sup> (10G)
<b>Vibration Resistance</b>	min. 50 m/s <sup>2</sup> (5G) @ 10 to 100 Hz
<b>Protection Grade</b>	IP 66
<b>Housing Material</b>	Aluminium Diecast
<b>Potting Material</b>	Polyurethane Resin, UL: V0
<b>Weight</b>	180 g
<b>Dimensions</b>	58 x 64 x 34 mm (LxWxH)
<b>Ordering Information Mini-PLC</b>	Mini-PLC STG-700 Art.-No. 0850-0700 GTIN 4251329400132
<b>Ordering Information Accessory</b>	Connection Cable VK-16 USB Art.-No. 0091-0016 GTIN 4251329400187

## DOCUMENTS, VIDEOS & SOFTWARE

[www.barth-elektronik.de](http://www.barth-elektronik.de)

[www.micon-l.de](http://www.micon-l.de)